



# TIIG

INJURY SURVEILLANCE IN THE NORTH WEST OF ENGLAND

## Injury attendances to Royal Bolton Hospital Emergency Department

### October 2012 to September 2013

This report summarises recorded injury attendances to Royal Bolton Emergency Department (ED) between October 2012 and September 2013.

Between October 2012 and September 2013 there were 44,945 injury attendances to Royal Bolton ED. Males accounted for over half (52%) of these attendances. The month with the highest attendances was July (n=4,320) with November having the lowest (n=3,194) (**Figure 1**). Of the specified injury groups falls (9%) accounted for the highest proportion followed by road traffic collision (RTC) and assault (both 3%) (**Table 1**).

The highest proportion of attendances was for persons aged 20 to 34 (25%), 35 to 49 and 65 plus years both represented 18% of injuries (**Figure 2**). Almost (48%) of fall attendees were aged 65 or over while over a quarter (27%) of burns and scalds injuries were sustained by 0 to 4 year olds. Nearly four in ten (39%) of RTC attendees were aged 20-34 (**Figure 3**).

**Table 2** shows the ethnicity of attendees to Royal Bolton ED. Over seven in ten (72%) were white.

The disposal of a patient can give an indication of the severity of the injuries sustained. Almost four in ten (39%) were discharged and 17% were admitted (**Table 3**). Over four in ten (45%) of burns and scalds attendees were referred and 46% were discharged,

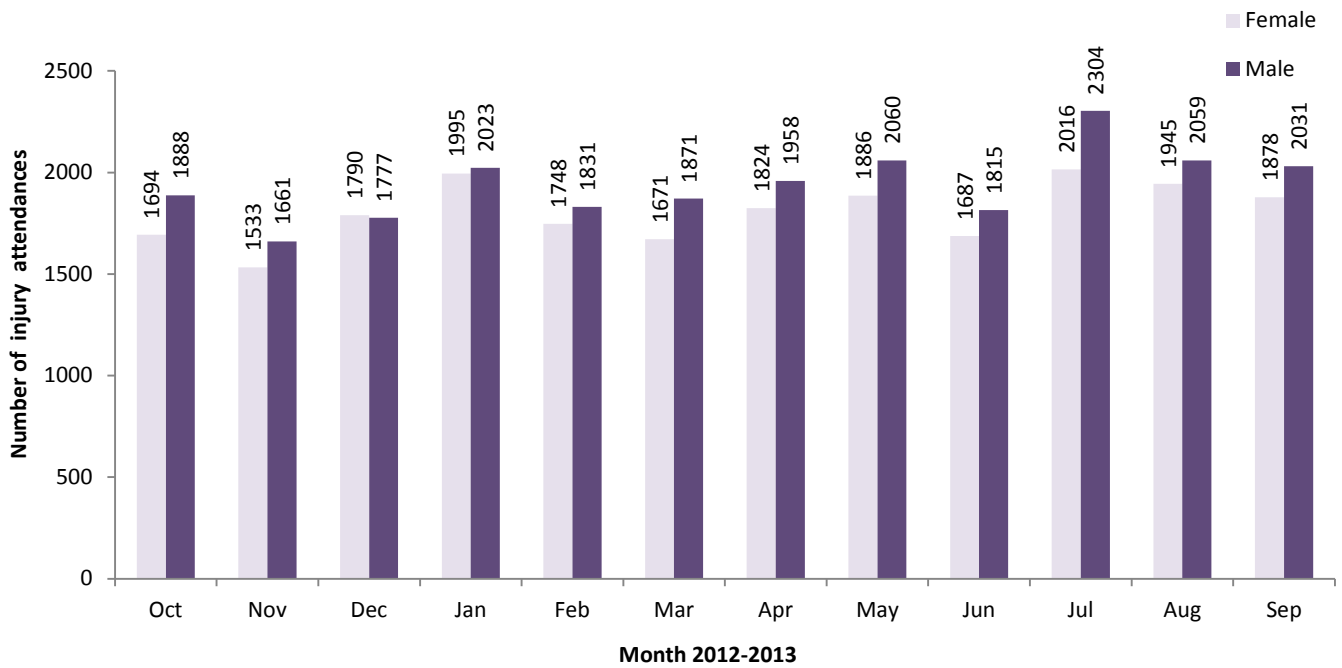
while over three in ten (31%) of deliberate self-harm (DSH) attendees were admitted. Close to half (46%) of assault attendees were discharged. Almost a quarter (23%) of fall attendees were admitted (**Table 4**).

**Table 5** shows the arrival methods of attendances at Royal Bolton ED. Almost three-quarters (74%) of attendees arrived on foot, whilst a quarter (25%) arrived by ambulance.

**Table 6** shows the location of the incident of the main injury groups (excluding other injury). Over six in ten (61%) of injuries occurred in the home. Four-fifths (80%) of burns and scalds occurred in the home. Almost a quarter (22%) of sports injuries occurred in an educational establishment.

**Table 7** presents data for assault attendees to Royal Bolton ED. Males represent seven in ten (70%) of assault attendances, whilst almost half (47%) of assault attendees were aged 20 to 34. Almost half (47%) of assault attendees arrived by ambulance.

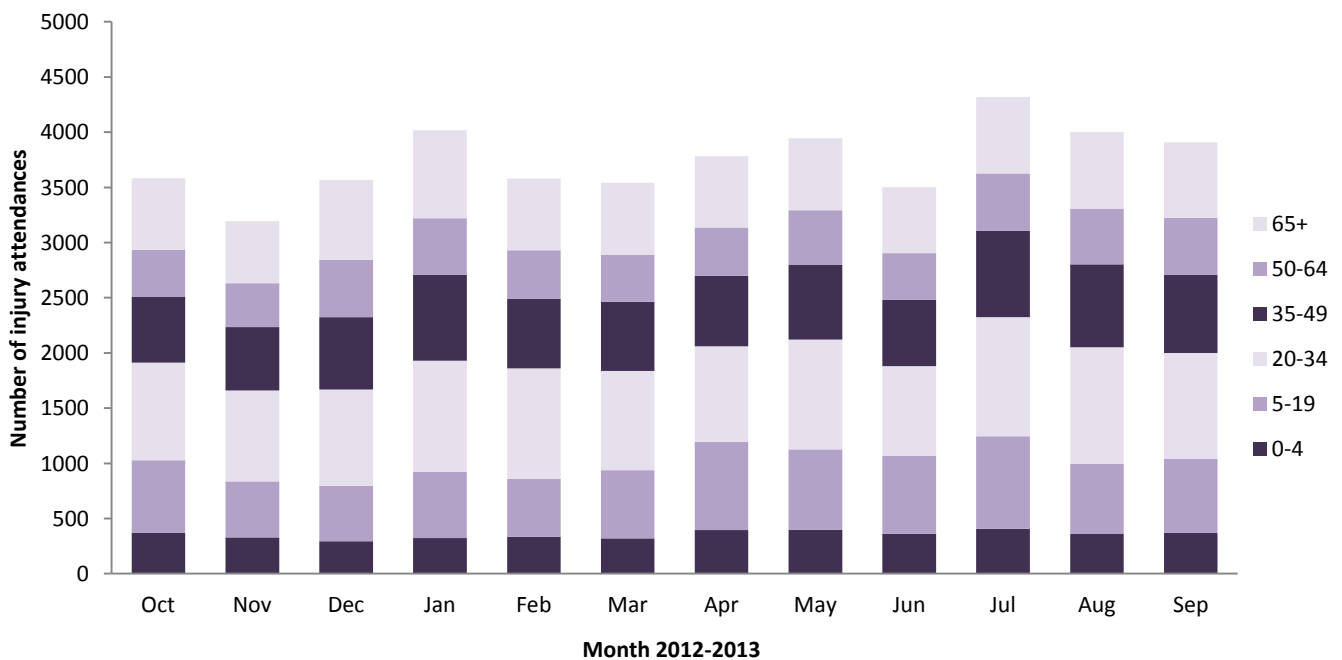
**Figure 1: Royal Bolton ED: Total injury attendances by gender and month, October 2012 to September 2013**



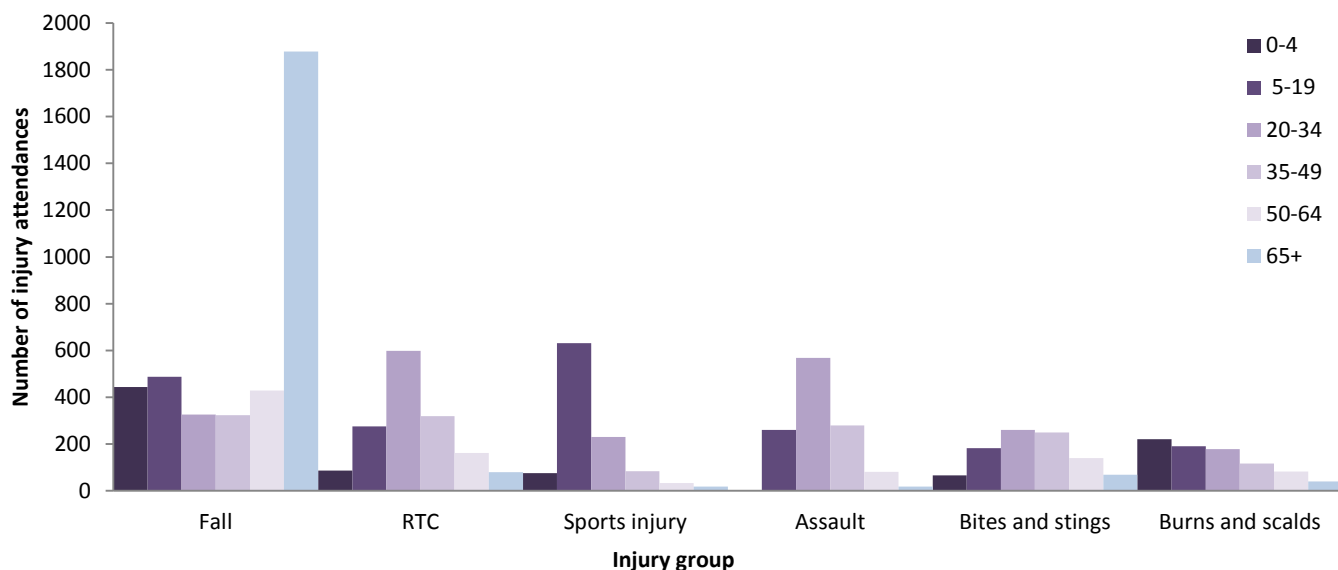
**Table 1: Royal Bolton ED: Total injury attendances by injury group and month, October 2012 to September 2013**

Injury group	Oct	Nov	Dec	Jan	Feb	Mar	Apr	May	Jun	Jul	Aug	Sep	Total	%
Other injury	2722	2426	2777	3178	2868	2714	2982	3126	2613	3354	3154	3096	35010	78
Fall	306	290	317	352	307	340	307	335	350	362	328	293	3887	9
RTC	154	134	146	161	125	106	120	127	117	102	115	116	1523	3
Assault	109	101	123	101	81	97	79	89	105	115	119	94	1213	3
Sports injury	108	80	60	66	74	112	138	99	87	88	52	109	1073	2
Bites and stings	88	69	43	47	37	57	66	76	104	166	106	108	967	2
Burns and scalds	64	72	66	77	55	82	54	62	72	86	74	67	831	2
DSH	31	22	35	36	32	34	36	32	54	47	56	26	441	1
Total	3582	3194	3567	4018	3579	3542	3782	3946	3502	4320	4004	3909	44945	100

**Figure 2: Royal Bolton ED: Total injury attendances by age group and month, October 2012 to September 2013**



**Figure 3: Royal Bolton ED: Total injury attendances by age group and injury group (excluding other injury), October 2012 to September 2013**



**Table 2: Royal Bolton ED: Total injury attendances by ethnicity and month, October 2012 to September 2013<sup>1</sup>**

Ethnicity	Oct	Nov	Dec	Jan	Feb	Mar	Apr	May	Jun	Jul	Aug	Sep	Total	%
White	2540	2279	2592	2882	2544	2535	2719	2842	2484	3092	2881	2785	32175	72
Not stated	369	344	325	422	364	335	405	401	382	447	410	381	4585	10
Not known	338	301	318	361	314	356	308	333	314	392	339	364	4038	9
Indian	109	85	110	111	115	117	116	131	103	126	115	120	1358	3
Pakistani	115	87	106	106	119	96	116	107	124	136	126	118	1356	3
Black	35	23	36	45	36	31	37	40	26	36	41	45	431	1
Mixed	27	28	25	34	38	29	30	28	27	31	34	44	375	1
Any other ethnic group	22	16	24	27	29	22	28	35	15	28	24	28	298	1
Any other Asian background	21	21	25	22	17	17	13	24	22	25	23	16	246	1
Bangladeshi	<6	<10	***	<6	***	***	5	***	5	<10	5	***	48	0
Chinese	***	***	***	***	***	***	5	***	0	***	6	<10	35	0
<b>Total</b>	<b>3577</b>	<b>3187</b>	<b>3563</b>	<b>4013</b>	<b>3577</b>	<b>3541</b>	<b>3777</b>	<b>3944</b>	<b>3497</b>	<b>4314</b>	<b>3999</b>	<b>3908</b>	<b>44945</b>	<b>100</b>

**Table 3: Royal Bolton ED: Total injury attendances by method of disposal and month, October 2012 to September 2013**

Disposal	Oct	Nov	Dec	Jan	Feb	Mar	Apr	May	Jun	Jul	Aug	Sep	Total	%
Discharged	1547	1136	1288	1341	1333	1330	1548	1554	1420	1786	1604	1591	17478	39
Referral/follow-up	1252	1256	1338	1652	1373	1376	1379	1548	1326	1562	1469	1350	16881	38
Admitted	538	547	657	765	651	621	597	634	557	664	685	719	7635	17
Other	245	255	284	260	222	215	258	210	199	308	246	249	2951	7
<b>Total</b>	<b>3582</b>	<b>3194</b>	<b>3567</b>	<b>4018</b>	<b>3579</b>	<b>3542</b>	<b>3782</b>	<b>3946</b>	<b>3502</b>	<b>4320</b>	<b>4004</b>	<b>3909</b>	<b>44945</b>	<b>100</b>

**Table 4: Royal Bolton ED: Total injury attendances by method of disposal and injury group (excluding other injury), October 2012 to September 2013**

Disposal	Assault		Bites and stings		Burns and scalds		DSH		Fall		RTC		Sports injury		Total	
	n	%	n	%	n	%	n	%	n	%	n	%	n	%	n	%
Discharged	555	46	547	57	383	46	85	19	1340	34	858	56	509	47	4277	43
Referral/follow-up	392	32	349	36	374	45	143	32	1259	32	566	37	470	44	3553	36
Admitted	49	4	16	2	11	1	138	31	897	23	46	3	53	5	1210	12
Other	217	18	55	6	63	8	75	17	391	10	53	3	41	4	895	9
<b>Total</b>	<b>1213</b>	<b>100</b>	<b>967</b>	<b>100</b>	<b>831</b>	<b>100</b>	<b>441</b>	<b>100</b>	<b>3887</b>	<b>100</b>	<b>1523</b>	<b>100</b>	<b>1073</b>	<b>100</b>	<b>9935</b>	<b>100</b>

<sup>1</sup> Please note that all numbers less than five have been suppressed in line with patient confidentiality and if there is only one number <5 in a category then two numbers will be suppressed at the next level.

**Table 5: Royal Bolton ED: Total injury attendances by arrival mode and month, October 2012 to September 2013**

Arrival mode	Oct	Nov	Dec	Jan	Feb	Mar	Apr	May	Jun	Jul	Aug	Sep	Total	%
Foot	2686	2417	2551	2849	2638	2623	2875	2986	2594	3289	2938	2940	33386	74
Ambulance	890	767	1007	1154	932	912	890	952	900	1015	1056	957	11432	25
Other	6	10	9	15	9	7	17	8	8	16	10	12	127	0
<b>Total</b>	<b>3582</b>	<b>3194</b>	<b>3567</b>	<b>4018</b>	<b>3579</b>	<b>3542</b>	<b>3782</b>	<b>3946</b>	<b>3502</b>	<b>4320</b>	<b>4004</b>	<b>3909</b>	<b>44945</b>	<b>100</b>

**Table 6: Royal Bolton ED: Total injury attendances by location and injury group (excluding other injury), October 2012 to September 2013<sup>2</sup>**

Incident location	Assault		Bites and stings		Burns and scalds		DSH		Fall		RTC		Sports injury		Total	
	n	%	n	%	n	%	n	%	n	%	n	%	n	%	n	%
Home	652	54	625	65	668	80	343	78	2781	72	531	35	449	42	6049	61
Other	278	23	276	29	113	14	67	15	863	22	486	32	90	8	2173	22
Public place	245	20	48	5	<10	1	<30	7	134	3	496	33	173	16	1134	11
Educational establishment	11	1	5	1	5	1	***	0	76	2	***	0	241	22	343	3
Work	<30	2	13	1	33	4	0	0	21	1	5	0	***	0	<100	1
Leisure facility	***	0	0	0	***	0	0	0	<10	0	***	0	<120	11	134	1
Not specified	0	0	0	0	0	0	0	0	***	0	0	0	0	0	***	0
<b>Total</b>	<b>1213</b>	<b>100</b>	<b>967</b>	<b>100</b>	<b>831</b>	<b>100</b>	<b>441</b>	<b>100</b>	<b>3887</b>	<b>100</b>	<b>1523</b>	<b>100</b>	<b>1073</b>	<b>100</b>	<b>9935</b>	<b>100</b>

**Table 7: Royal Bolton ED: Total assault attendances by gender, arrival mode, location of incident and age group of attendance, October 2012 to September 2013<sup>2</sup>**

	Assault attendees (n=1,213)		All injury attendees (n=44,945)	
	N	%	% (n)	
<b>Gender</b>				
Male	846	70	52	
Female	367	30	48	
<b>Arrival mode</b>				
Ambulance	571	47	25	
Foot	632	52	74	
Other	10	1	0	
<b>Age group</b>				
0 - 4	***	0	9	
5 - 19	261	22	17	
20 - 34	568	47	25	
35 - 49	280	23	18	
50 - 64	82	7	13	
65 plus	<20	2	18	

Published November 2013

Jennifer Brizell (TIIG researcher)

Centre for Public Health, Faculty of Education, Health and Community, Liverpool John Moores University  
2<sup>nd</sup> Floor, Henry Cotton Campus, 15-21 Webster Street, Liverpool, L3 2ET

Tel: 0151 231 4500 Email: [j.s.brizell@ljmu.ac.uk](mailto:j.s.brizell@ljmu.ac.uk)

Website: [www.tiig.info](http://www.tiig.info) (please note all data requests should be made through the TIIG website)

Twitter: @TIIG\_CPH

<sup>2</sup> Please note that all numbers less than five have been suppressed in line with patient confidentiality and if there is only one number <5 in a category then two numbers will be suppressed at the next level.